

## **EMBASSY—GUARANTEED FOR A LIFETIME**

In our continued commitment to high quality, we're proud to offer Medeco Embassy lever and knob cylindrical locksets—the only commercial grade locksets guaranteed for a lifetime. Embassy locksets are available in Grade 1 heavy duty or Grade 2 Plus (which features the same chassis as Grade 1 for higher performance).

## **EMBASSY—RELIABLE CLUTCH DESIGN**

The Embassy clutch mechanism or “free wheeling” design offers an advantage over rigid locked leversets by reducing damage to the internal lock mechanism. Unlike a shear pin system, when it's locked the Embassy clutch disengages the outside lever so it can turn freely without opening the latch. Embassy locksets withstood cycle testing of over 1,000,000 times (two and a half times the Grade 1 requirement) without drooping or failure thanks to the heavy duty spring pack which eliminates loose levers. Embassy leverset handles now have a “breakaway” feature (built into the back side of the handle) designed to reduce damage to the internal lock mechanism and to prevent the latch from opening. This feature permits the handle to be sheared off when extremely over-torqued before the latch can be forced open. The leverage point for attacking the lockset by over-torquing is then eliminated.

## **VERSATILE DESIGN AND COMPATIBILITY**

Embassy levers and knobs accept Medeco high security cylinders which provide maximum physical protection and make it virtually impossible to get unauthorized duplicate keys. Another option for your locking system is KeyMark®. KeyMark is a Medeco system of affordable, solid brass replacement cylinders that offers genuine, patented key control for areas that don't require the highest level of physical security. Embassy also accepts other popular Key-In-Knob cylinders or Best® style Interchangeable Core Cylinders.

## **QUALITY TECHNICAL ASSISTANCE**

Experienced Medeco technical experts and on-staff security professionals are always happy to discuss your security needs, offer solutions, or help you order the right parts for servicing your security system.

# GRADE 1

---

## HEAVY DUTY LEVER LOCKSET

### 19 SERIES

The 19 Series lever lockset is designed for use in heavy duty commercial, institutional, and industrial applications.

#### CERTIFICATIONS

ANSI A156.2, 1996 Series 4000, Grade 1. UL-Listed for use on fire doors having a rating up to and including three hours.

#### LEVERS

Solid cast with 1/2" (13 mm) return meets California return standards. This design satisfies all Americans with Disabilities Act (ADA) requirements.

#### ROSES

Through-bolted, 3 7/16" (87 mm) diameter, spring loaded, automatically adjusts for door thickness. Heavy, number 10 through-bolts.

#### LATCHES & STRIKES

**Latch:** Backset 2 3/4" (70 mm), Front 1 1/8" x 2 1/4" (29 mm x 57 mm),  
Throw 9/16" (14 mm)

**Strike:** 4 7/8" (124 mm) ANSI curved lip, non-handed

#### DOOR THICKNESS

1 3/8" (35 mm) available with spacer plates sold separately

1 5/8" to 1 7/8" (41 mm to 48 mm)

#### LOCK MECHANISM

Exceptional clutch mechanism and cast stainless steel retractor with bronze roller bearings provide high strength, smooth operation, and long life durability. When locked, Embassy's clutch disengages the outside lever allowing it to turn freely without opening the latch and avoid over-torquing.



AMERICAN



CRESCENT

# GRADE 2 PLUS

---

## MEDIUM DUTY LEVER LOCKSET

### 18 SERIES

The 18 Series lever lockset is designed for use in medium duty commercial, institutional, industrial, and residential applications.

#### CERTIFICATIONS

ANSI A156.2, 1996 Series 4000, Grade 2. UL-Listed for use on fire doors having a rating up to and including three hours.

#### LEVERS

Solid cast with 1/2" (13 mm) return meets California return standards. The design satisfies all ADA requirements.

#### ROSES

Through-bolted, 3 1/4" (82 mm) diameter, spring loaded, automatically adjusts for door thickness. Heavy, number 10 through-bolts.

#### LATCHES & STRIKES

**Latch:** Backset 2 3/4" (70 mm), Front 1 1/8" x 2 1/4" (29 mm x 57 mm),  
Throw 1/2" (13 mm)

**Strike:** 2 3/4" (70 mm) T-strike, curved lip with dust box

#### DOOR THICKNESS

1 3/8" (35 mm) available with spacer plates sold separately  
1 5/8" to 1 7/8" (41 mm to 48 mm)

#### LOCK MECHANISM

Exceptional clutch mechanism and cast stainless steel retractor with bronze roller bearings provide high strength, smooth operation, and long life durability. When locked, Embassy's clutch disengages the outside lever allowing it to turn freely without opening the latch and avoid over-torquing.



AMERICAN



CRESCENT

# HOW TO SPECIFY LEVERS

XX X XX X X X X — X X X — XX — XX  
 Series Prefix Cylinder Type Function Trim Door Thickness Backset Latch Pins Strike Lever Option Finish Keyway

## OPTIONS

### SERIES PREFIX

- 18** 18 Series Medium Duty Lever Lockset
- 19** 19 Series Heavy Duty Lever Lockset

### CYLINDER TYPE

- Interchangeable Core Lever & Key-In-Lever Lockset**
- Original or Less Cylinder
- W** Biaxial®
- K** KeyMark®

### FUNCTION

- Interchangeable Core Lever**
- 03** Entrance (ANSI F81,F82)
- 04** Classroom (ANSI F84)
- 05** Storeroom (ANSI F86)
- 06** Vestibule (ANSI F88)
- 09** Institution (ANSI F87)
- 0B** Communicating (ANSI F80)
- 0F** Communicating
- 0H** Corridor (ANSI F90)†
- 0L** Electrically Locked†
- 0U** Electrically Unlocked†
- 0R** Classroom Intruder (ANSI F110)†

### Key-In-Lever Lockset

- 01** Privacy (ANSI F76)
- 02** Passage (ANSI F75)
- 10** Dummy Trim (single)
- 23** Entrance (ANSI F81,F82)
- 24** Classroom (ANSI F84)
- 25** Storeroom (ANSI F86)
- 26** Vestibule (ANSI F88)
- 29** Institution (ANSI F87)
- 0A** Dummy Trim (double)
- 2B** Communicating (ANSI F80)
- 2C** Exit (ANSI F83)
- 2D** Patio (ANSI F77)
- 2E** Exit (ANSI F89)
- 2F** Communicating
- 2G** Exit
- 2H** Corridor (ANSI F90)†
- 2L** Electrically Locked†
- 2U** Electrically Unlocked†
- 2R** Classroom Intruder (ANSI F110)†

### TRIM

#### Interchangeable Core Lever

- 1** American - for Medeco 32-Series I/C
- 2** Crescent - for Medeco 32-Series I/C
- 3** American - for Corbin/Russwin I/C
- 4** Crescent - for Corbin/Russwin I/C
- 5** American - for KeyMark I/C
- 6** Crescent - for KeyMark I/C
- 9** American - for Yale I/C
- 0** Crescent - for Yale I/C

#### Key-In-Lever Lockset

- 1** American
- 2** Crescent
- 3** American for Corbin/Russwin
- 4** Crescent for Corbin/Russwin
- 7** American for Sargent
- 8** Crescent for Sargent

### DOOR THICKNESS

- 1** 1 5/8" to 1 7/8"
  - 3** 1 7/8" to 2 1/4"
- For 1 3/8", order spacer *plates CP-181030-XX (18 Series) or CP-181370-XX (19 Series) separately*

### BACKSET

- 0** No latch, dummy trim only
- 1** Standard. 2 3/4"
- 2** 2 3/8"

### LATCH\*

- 0** No latch, dummy trim only
- 1** **Standard 19 Series.** 9/16" throw, 1 1/8" X 2 1/4" front. Available only with 2 3/4" backset.
- 2** **Standard 18 Series.** 1/2" throw, 1 1/8" X 2 1/4" front. Available only with 2 3/4" backset.
- 3** 3/4" throw, 1 1/8" X 2 1/4" front. Available only with 2 3/4" backset, deadlatch only.
- 4** 1/2" throw, 1" X 2 1/4" front. Available only with 2 3/8" backset.

### NUMBER OF PINS

- 0** No cylinder
- 5** Five pins
- 6** Six pins
- 7** Seven pins

### STRIKE\*

- 0** No strike, dummy trim only
- 1** Standard 19 Series. 4 7/8" ANSI curved lip
- 2** Standard 18 Series. 2 3/4" T-strike curved lip with dust box

### LEVER OPTION

- 1** Abrasive coated, outside lever only
- 2** Abrasive coated, inside lever only
- 3** Abrasive coated, outside & inside levers
- 4** Standard, uncoated lever

### FINISH

- 05** Bright brass
- 12** Satin Bronze
- 13** Oil rubbed bronze
- 25** Bright chrome
- 26** Satin chrome

### KEYWAY

Leave keyway option blank for lockset ordered less cylinder or core.

\* 19 Series only sold with Grade 1 Latch and Strike. Choose number 1 for each option.

† Function only available in 19 Series

# LEVER

---

## SPECIFICATIONS

### SUGGESTED SPECIFICATION FOR EMBASSY® 19 SERIES

All locksets shall be 19 Series Lever Locksets supplied by Medeco High Security Locks, Inc.

All locksets must conform to ANSI A156.2, Series 4000, Grade 1, and be UL-Listed. Locksets must be heavy duty cylindrical type with a minimum 2 3/4" (70 mm) backset with a 9/16" (14 mm) throw latchbolt.

A single lock chassis shall accommodate 1 5/8" (41 mm) to 1 7/8" (48 mm) door thickness. Locksets shall be easily reversed in the field. Locksets shall have separate anti-rotation through bolts, and shall have no exposed mounting screws.

A single lockset shall accommodate conventional cylinders and all levels of masterkeying, key control, high security, and interchangeable core. Cylinders shall be easily changed without disassembling the lockset.

Locksets shall have solid cast levers without plastic inserts and with a breakaway feature to reduce damage to the internal lock mechanism and prevent latch from opening if severely over-torqued. Levers shall operate independently and shall have inside and outside lever return springs to prevent lever sag. Lever handles shall be a minimum of 4 3/4" (121 mm) in length and shall have a minimum of 2" (51 mm) clearance from the surface of the door to the inside of the lever at the midpoint. Lever handle shall return to within 1/2" (13 mm) of the door surface. Outside levers on keyed locksets shall be removable only when the correct key is in the cylinder.

Locksets must be available with tactile lever for identification of hazardous areas.

All locksets shall have a clutch mechanism to allow the outside lever, when locked, to turn freely up and down without opening the latch.

All locks, trim, and cylinders shall be from one manufacturer to maintain complete lockset warranty.

All locksets shall carry a lifetime limited warranty.



### SUGGESTED SPECIFICATION FOR EMBASSY® 18 SERIES

All locksets shall be 18 Series Lever Locksets supplied by Medeco High Security Locks, Inc.

All locksets must conform to ANSI A156.2, Series 4000, Grade 2, and be UL-Listed. Locksets must be medium duty cylindrical type with 2 3/8" (60 mm) or 2 3/4" (70 mm) backset with a 1/2" (13 mm) throw latchbolt.

A single lock chassis shall accommodate 1 5/8" (41 mm) to 1 7/8" (48 mm) door thickness. Locksets shall be easily reversed in the field. Locksets shall have separate anti-rotation through-bolts, and shall have no exposed mounting screws.

A single lockset shall accommodate conventional cylinders and all levels of masterkeying, key control, high security, and interchangeable core. Cylinders shall be easily changed without disassembling the lockset.

Locksets shall have solid cast levers without plastic inserts and a breakaway feature to reduce damage to the internal lock mechanism and prevent latch from opening if severely over-torqued. Levers shall operate independently and shall have inside and outside lever return springs to prevent lever sag. Lever handles shall be a minimum of 4 3/4" (121 mm) in length and shall have a minimum of 2" (51 mm) clearance from the surface of the door to the inside of the lever at the midpoint. Lever handle shall return to within 1/2" (13 mm) of the door surface. Outside levers on keyed locksets shall be removable only when the correct key is in the cylinder.

Locksets must be available with tactile lever for identification of hazardous areas.

All locksets shall have a clutch mechanism to allow the outside lever, when locked, to turn freely up and down without opening the latch.

All locks, trim, and cylinders shall be from one manufacturer to maintain complete lockset warranty.

All locksets shall carry a lifetime limited warranty.



# GRADE 1

## HEAVY DUTY KNOB LOCKSET

### 25 SERIES

The 25 Series knob lockset is designed for use in heavy duty commercial and industrial applications.

#### CERTIFICATIONS

ANSI A156.2, 1996 Series 4000, Grade 1. UL-Listed for use on fire doors having a rating up to and including three hours.

#### KNOBS

Heavy, cold-forged steel provides superior strength and durability. Features 2 1/4" (57 mm) diameter with .062" steel reinforcement to resist crushing and withstand more abuse.

#### ROSES

Adjustable both sides, cold-forged steel reinforced 2 3/4" (70 mm) diameter easily adjusts for door thickness.

#### LATCHES & STRIKES

**Latch:** Backset 2 3/4" (70 mm), Front 1 1/8" x 2 1/4" (29 mm x 57 mm),  
Throw 9/16" (14 mm)

**Strike:** 4 7/8" (124 mm) ANSI curved lip

#### DOOR THICKNESS

1 5/8" to 2" (41 mm to 51 mm), Standard

#### LOCK MECHANISM

Cast stainless steel retractor with bronze roller bearings provides high strength, smooth operation, and long life durability.



CLASSIC



MODERN

# GRADE 2 PLUS

---

## MEDIUM DUTY KNOB LOCKSET

### 24 SERIES

The 24 Series knob lockset is designed for use in medium duty commercial, institutional, industrial, and residential applications.

#### CERTIFICATIONS

ANSI A156.2, 1996 Series 4000, Grade 2. UL-Listed for use on fire doors having a rating up to and including three hours.

#### KNOBS

Heavy, cold-forged steel with superior strength and durability. Features 2 1/4" (57 mm) diameter with .047" steel reinforcement to resist crushing and withstand more abuse.

#### ROSES

Adjustable both sides, cold-forged steel reinforced 2 3/4" (70 mm) diameter easily adjusts for door thickness.

#### LATCHES & STRIKES

**Latch:** Backset 2 3/8" (60 mm), Front 1" x 2 1/4" (25 mm x 57 mm),  
Throw 1/2" (13 mm)

*Note: For Canada, Backset 2 3/4" (70 mm), Front 1 1/8" x 2 1/4"  
(29 mm x 57 mm), Throw 9/16" (14 mm)*

**Strike:** 2 3/4" (70 mm) T-strike, curved lip with dust box

#### DOOR THICKNESS

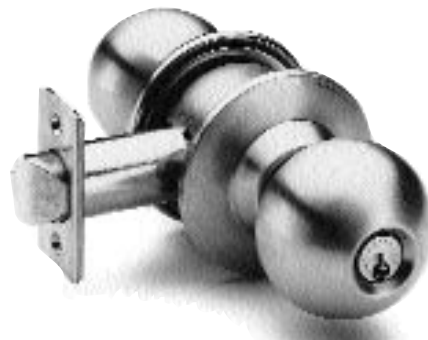
1 1/4" to 1 7/8" (32 mm to 48 mm), Standard

#### LOCK MECHANISM

Cast stainless steel retractor with bronze roller bearings provides high strength, smooth operation, and long life durability.



CLASSIC



MODERN

# HOW TO SPECIFY KNOBS



## OPTIONS

### SERIES PREFIX

- 24** 24 Series Medium Duty Knob Lockset
- 25** 25 Series Heavy Duty Knob Lockset

### CYLINDER TYPE

#### *Interchangeable Core Knob & Key-In-Knob Lockset*

- Original or Less Cylinder
- W** Biaxial®
- K** KeyMark®

### FUNCTION

#### *Interchangeable Core Knob*

- 03** Entrance (ANSI F81,F82)
- 04** Classroom (ANSI F84)
- 05** Storeroom (ANSI F86)
- 06** Vestibule (ANSI F88)
- 09** Institution (ANSI F87)
- 0B** Communicating (ANSI F80)
- 0F** Communicating
- 0H** Corridor (ANSI F90)†
- 0L** Electrically Locked†
- 0U** Electrically Unlocked†

#### *Key-In-Knob Lockset*

- 01** Privacy (ANSI F76)
- 02** Passage (ANSI F75)
- 10** Dummy Trim (single)
- 23** Entrance (ANSI F81,F82)
- 24** Classroom (ANSI F84)
- 25** Storeroom (ANSI F86)
- 26** Vestibule (ANSI F88)
- 29** Institution (ANSI F87)
- 0A** Dummy Trim (double)
- 2B** Communicating (ANSI F80)
- 2C** Exit (ANSI F83)
- 2D** Patio (ANSI F77)
- 2E** Exit (ANSI F89)
- 2F** Communicating
- 2G** Exit
- 2H** Corridor (ANSI F90)†
- 2L** Electrically Locked†
- 2U** Electrically Unlocked†

### TRIM

#### *Interchangeable Core Knob*

- 1** Classic - for Medeco 32-Series I/C
- 2** Modern - for Medeco 32-Series I/C
- 5** Classic - for KeyMark I/C
- 6** Modern -for KeyMark I/C

#### *Key-In-Knob Lockset*

- 1** Classic
- 2** Modern

### DOOR THICKNESS

- 1** Standard 25 Series. 1 5/8" to 2" Standard 24 Series. 1 5/8" to 1 7/8"
- 3** 1 7/8" to 2 1/4"†

### BACKSET

- 0** No latch, dummy trim only
- 1** Standard 25 Series. 2 3/4"
- 2** Standard 24 Series. 2 3/8"

### LATCH\*

- 0** No latch, dummy trim only
- 1** **Standard 25 Series.** 9/16" throw, 1 1/8" X 2 1/4" front. Available only with 2 3/4" backset.
- 2** 1/2" throw, 1 1/8" X 2 1/4" front. Available only with 2 3/4" backset.
- 3** 3/4" throw, 1 1/8" X 2 1/4" front Available only with 2 3/4" backset, deadlatch only.
- 4** **Standard 24 Series.** 1/2" throw, 1" X 2 1/4" front. Available only with 2 3/8" backset.

### NUMBER OF PINS

- 0** No cylinder
- 5** Five pins
- 6** Six pins
- 7** Seven pins

### STRIKE\*

- 0** No strike, dummy trim only
- 1** Standard 25 Series. 4 7/8" ANSI curved lip
- 2** Standard 24 Series. 2 3/4" T-strike curved lip with dust box

### KNOB OPTION

- 1** Abrasive coated, outside knob only
- 2** Abrasive coated, inside knob only
- 3** Abrasive coated, outside & inside knobs
- 4** Standard, uncoated knob

### FINISH

- 05** Bright brass
- 12** Satin Bronze
- 13** Oil rubbed bronze
- 29** Bright stainless steel
- 30** Satin stainless steel

### KEYWAY

Leave keyway option blank for lockset ordered less cylinder or core.

- \* 25 Series only sold with Grade 1 Latch and Strike. Choose number 1 for each option.

† Function or option only available in 25 Series

- For Canada, select Option 1 for backset and latch as standard.



# K N O B

## S P E C I F I C A T I O N S

### SUGGESTED SPECIFICATION FOR EMBASSY® 25 SERIES

All locksets shall be 25 Series Knob Locksets supplied by Medeco High Security Locks, Inc.

All locksets must conform to ANSI A156.2, Series 4000, Grade 1, and be UL-Listed. Locksets must be heavy duty cylindrical type with a minimum 2 3/4" (70 mm) backset with a 9/16" (14 mm) throw latchbolt.

A single lock chassis shall accommodate 1 3/8" (35 mm) to 2" (51 mm) door thickness. Locksets shall be easily reversed in the field and have no exposed mounting screws.

Locksets shall have a steel chassis suitably plated for rust resistance. The chassis shall contain a cast stainless steel latch retractor fitted with bronze roller bearings for strength and smoothness of operation.

A single lockset shall accommodate conventional cylinders and all levels of masterkeying, key control, high security, and interchangeable core. Cylinders shall be easily changed without disassembling the lockset.

Locksets shall have knobs and roses of reinforced construction. Knob plus reinforcement shall have a minimum thickness of .102". Outside knobs on keyed locksets shall be removable only when the correct key is in the cylinder.

Locksets must be available with tactile knob for identification of hazardous areas.

All locks, trim, and cylinders shall be from one manufacturer to maintain complete lockset warranty.

All locksets shall carry a lifetime limited warranty.



### SUGGESTED SPECIFICATION FOR EMBASSY® 24 SERIES

All locksets shall be 24 Series Knob Locksets supplied by Medeco High Security Locks, Inc.

All locksets must conform to ANSI A156.2, Series 4000, Grade 2, and be UL-Listed. Locksets must be medium duty cylindrical type with 2 3/8" (60 mm) or 2 3/4" (70 mm) backset with a 1/2" (13 mm) throw latchbolt.

A single lock chassis shall accommodate 1 3/8" (35 mm) to 2" (51 mm) door thickness. Locksets shall be easily reversed in the field and have no exposed mounting screws.

A single lockset shall accommodate conventional cylinders and all levels of masterkeying, key control, high security, and interchangeable core. Cylinders shall be easily changed without disassembling the lockset.

Locksets shall have knobs and roses of reinforced construction. Knob plus reinforcement shall have a minimum thickness of .075". Outside knobs on keyed locksets shall be removable only when the correct key is in the cylinder.

Locksets must be available with tactile knob for identification of hazardous areas.

All locks, trim, and cylinders shall be from one manufacturer to maintain complete lockset warranty.

All locksets shall carry a lifetime limited warranty.



# LOCK SET FUNCTIONS

FUNCTION	FUNCTION #		ANSI #	KNOB	LEVER
	KIK	I/C			
<b>Entrance:</b> Outside locked by pushing turn button inside. Key outside opens lock. Rotating inside lever/knob releases button and outside lever/knob. By pushing and turning inside button, outside lever/knob remains locked.	23	03	F81, F82		
<b>Classroom:</b> Latch by lever/knob inside. Outside lever/knob locked or unlocked by key.	24	04	F84		
<b>Storeroom:</b> Latch by lever/knob inside, key outside. Outside lever/knob always locked.	25	05	F86		
<b>Vestibule:</b> Latch by lever/knob either side, except when outside lever/knob locked by key inside. Key outside retracts deadlocking latch, inside always open.	26	06	F88		
<b>Institution:</b> Both levers/knobs always locked. Latch by key both sides.	29	09	F87		
<b>Patio:</b> Latch by lever/knob either side unless outside lever/knob locked by push button inside. Unlocks by turning inside lever/knob or closing door.	2D		F77		
<b>Communicating:</b> Key in both levers/knobs. Locks or unlocks either lever/knob independently of the other.	2B	0B	F80		
<b>Communicating:</b> Blank outside. Inside lever/knob locked or unlocked by key.	2F	0F			
<b>Privacy:</b> Latch by lever/knob either side unless outside lever/knob locked by push button from inside. Outside unlocks by turning inside lever, or outside emergency turn or closing door.	01		F76		
<b>Passage:</b> Latch by lever/knob either side.	02		F75		
<b>Exit:</b> Deadlocking latch by lever/knob either side except when outside locked by turn button inside. Inside lever/knob always opens latch. Turn button must be manually operated to unlock outside.	2C		F83		
<b>Exit:</b> Deadlocking latch by lever/knob inside. Outside always locked.	2E		F89		
<b>Exit:</b> Blank outside. Latch by lever/knob inside.	2G				
<b>Corridor:</b> Latch by knob either side unless outside locked by key or inside push button. Unlocked by key, turning inside knob, or closing door. (25 Series only)	2H	0H	F90		
<b>Electrically Locked:</b> (Fail Safe) Outside lever always locked electrically. Open by key outside, switch or loss of power.	2L	0C			
<b>Electrically Unlocked:</b> (Fail Secure) Outside lever always locked until unlocked by key or electric.	2U	0U			
<b>Classroom Intruder:</b> Deadlocking latch bolt operated by lever from either side. Key inside or outside locks or unlocks outside lever. Insider lever always unlocked.	2R	0R	F110		
<b>Dummy Trim:</b> Outside only, rigid.	10				
<b>Dummy Trim:</b> Both sides, rigid. (Lever only)	0A				

FUNCTIONS

# LOCKSET CONSTRUCTION

## EMBASSY LEVER

### Double Bolt System

Epoxy coated bolts assure firm mounting and resist loosening from door vibration.

### Chassis

The Embassy lockset chassis is constructed of heavy gauge, cold-rolled steel. The chassis housing is fastened with two retaining pins and is easily removable for servicing. All parts are suitably plated to resist rust and corrosion.

### Clutching Mechanism

The reliable Embassy clutch mechanism allows the lever to spring back into position consistently and helps prevent over-torquing. When locked, the Embassy clutch disengages the outside lever, so it can turn freely without opening the latch.

### Lever

The Embassy lever is a thick, solid casting which provides strength and durability and offers a wider and easier grip surface. It features a free wheeling design that is unbeatable at withstanding abuse. It has a built-in "breakaway" feature designed to reduce damage to the internal lock mechanism and to prevent the latch from being opened when the lockset is severely over-torqued. Levers return to within 1/2" (13 mm) of the door surface. This design satisfies all Federal ADA and State Disability requirements. The lockset doesn't require special preparation to fit right- or left-handed doors (non-handed).

### Backsets

2 3/4" (70 mm), 2 3/8" (60 mm), or 5" (127 mm) backsets are available.

### Retractor

The Embassy retractor is cast stainless steel with bronze roller bearings to provide high strength, smooth operation, and long life durability.

### Spring Loaded Roses

The Embassy lever return spring is heavy gauge steel wire with a rose and spring drive plate of premium thickness for added strength and durability. The Embassy spring cover can easily be removed for servicing. Strength and reliability are ensured by two .688" wide lugs, which decrease susceptibility to damage and prevent droop. Tested to over one million continuous cycles without failure, this mechanism exceeds ANSI Grade 1 specifications.

### Cylinder

Embassy levers are designed to be versatile and are compatible with a wide array of Key-In-Lever and Interchangeable Core Cylinders.

## EMBASSY KNOB

### Chassis

The Embassy lockset chassis is constructed of heavy gauge, cold-rolled steel. The chassis housing is fastened with two retaining pins and is easily removable for servicing. All parts are suitably plated to resist rust and corrosion.

### Cylinder

Embassy knobs are designed to be versatile and are compatible with a wide array of Key-In-Knob and Interchangeable Core Cylinders.

### Backsets

2 3/4" (70 mm), 2 3/8" (60 mm), or 5" (127 mm) backsets are available.

### Retractor

The Embassy retractor is cast stainless steel with bronze roller bearings to provide high strength, smooth operation, and long life durability.

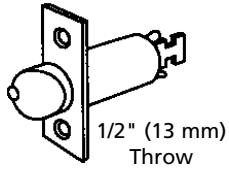
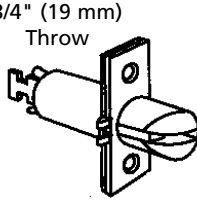
### Rose

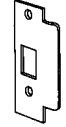

Cold-forged, steel-reinforced rose easily adjusts for door thickness.

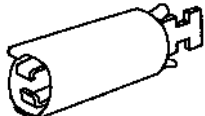
### Knobs


Embassy knobs are heavy, cold-forged steel with superior thickness for added strength and durability. They are reinforced to withstand abuse and resist crushing.

# LOCKSET ACCESSORIES

LATCHES FOR 18, 19, 24, & 25 SERIES <i>(Specify Finish)</i>	GRADE	THROW	BACKSET (FRONT)		FUNCTION
			2 3/8" (60 MM) (1" X 2 1/4")	2 3/4" (70 MM) (1 1/8" X 2 1/4")	
 1/2" (13 mm) Throw  3/4" (19 mm) Throw	2	1/2" (13 mm)	CP-181040 CP-181220 CP-181050 CP-181230	CP-181240 CP-181250 CP-181260 CP-181270	Entrance, etc. Privacy Passage Patio
	1	9/16" (14 mm)		CP-181120 CP-181280 CP-181130 CP-181290	Entrance, etc. Privacy Passage Patio
	1	3/4" (19 mm)		CP-181300	Entrance, etc. (626 only)

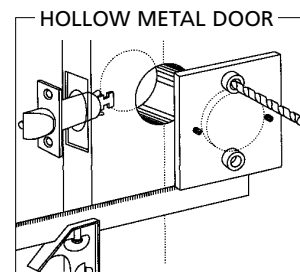
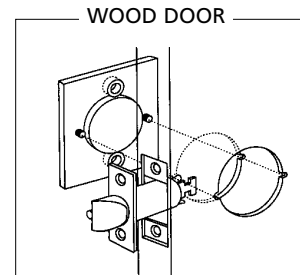
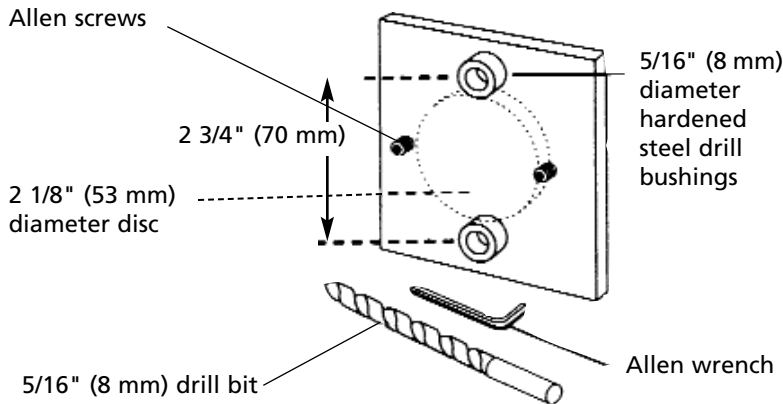
STRIKES <i>(Specify Finish)</i>	PART	DESCRIPTION
 ANSI Strike  T-Strike	CP-181320	4 7/8" (124 mm) ANSI strike, non-handed
	CP-181310	2 3/4" (70 mm) T-strike, non-handed

BACKSET EXTENDER	PART	DESCRIPTION
	CP-181020	5" (127 mm) using 2 3/4" (70 mm) backset
	CP-181330	5" (127 mm) Privacy & Patio functions

ALUMINUM SPACER RINGS <i>(Specify Finish)</i>	PART	DESCRIPTION
	CP-181030	For 1 3/8" (35 mm) door, two per set, 18 and 24 Series
	CP-181370	For 1 3/8" (35 mm) door, two per set, 19 and 25 Series

## 18 & 19 SERIES LOCK INSTALLATION TOOL CP-282990

Provides exact through-hole locations for lever locksets in hollow metal doors and wood doors.

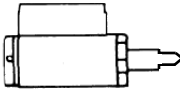
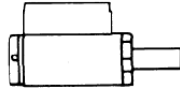
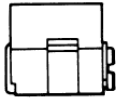
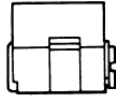


ACCESSORIES

# LOCKSET CYLINDERS

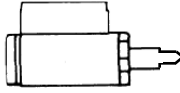
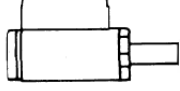
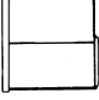
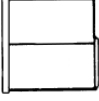
These charts show the full range of Medeco and KeyMark cylinders available. These cylinders may be ordered combined or uncombined as part of a complete lockset system or separately.

## MEDECO KEY-IN-KNOB, KEY-IN-LEVER, AND INTERCHANGEABLE CORE CYLINDERS

CYLINDER DESCRIPTION	PART NUMBER	TAILPIECE	PINS
Medeco Cylinder for use in lever functions 24, 26, 2B, 2R, or 2F and knob function 24. 	20W200V0	CT-V00	6
Medeco Cylinder for use in lever functions 23, 25, 2L, 2U, 2H, or 29 and in all knob functions except 24. 	20W200V1	CT-V01	6
Medeco Interchangeable Core Cylinder for use in lever functions 03, 05, 0L, 0U, 0H, or 09 and in all knob functions except 04. 	32W0201	CT-V32	6
Medeco Interchangeable Core Cylinder for use in lever functions 04, 06, 0B, 0R, or 0F and in knob function 04. 	32W0201	CT-V31	6





Note: Tailpieces are shown vertical. For 24 and 25 Series, must be horizontal.

## KEYMARK KEY-IN-KNOB, KEY-IN-LEVER, AND INTERCHANGEABLE CORE CYLINDERS

CYLINDER DESCRIPTION	PART NUMBER	TAILPIECE	PINS
KeyMark Cylinder for use in lever functions 24, 26, 2B, 2R, or 2F and knob function 24. 	20K200V0	CT-V00	6
KeyMark Cylinder for use in lever functions 23, 25, 2L, 2U, 2H, or 29 and in all knob functions except 24. 	20K200V1	CT-V01	6
KeyMark Interchangeable Core Cylinder for use in lever functions 04, 06, 0B, 0R, or 0F and in knob function 04. 	33K600001-(6 Pin) 33K700001-(7 Pin)	CT-V05 CT-V28	6, 7
KeyMark Interchangeable Core Cylinder for use in lever functions 03, 05, 09, 0L, 0U, 0H, and in all knob functions except 04. 	33K600001-(6 Pin) 33K700001-(7 Pin)	CT-V15 CT-V15	6, 7

Note: Tailpieces are shown vertical. For 24 and 25 Series, must be horizontal.

## TAILPIECES FOR USE WITH NON-MEDECO CYLINDERS

DESCRIPTION	TAILPIECES	INDIVIDUAL PART NUMBER	PKG. PART NUMBER (PKG. OF 10)
Allows Schlage® 23-001 or Corbin Russwin® 2000-034 cylinders to be used in 18 & 19 Series lever functions 23, 25, 2L, 2U, or 29 and in all knob functions except 24. 	CT-V11	CT-V11	94-0068
Allows Schlage® 23-001 or Corbin Russwin® 2000-034 cylinders to be used in 18 & 19 Series lever functions 24, 26, 2B, 2R, or 2F and in knob function 24. 	CT-V12	CT-V12	94-0085
Allows ILCO® 7005, or Lori® 1539, or Sargent® 13-3266 cylinders to be used in 18 & 19 Series lever functions 23, 25, 2L, 2U, or 29 and in all knob functions except 24. 	CT-V13	CT-V13	94-0086
Allows ILCO® 7005, or Lori® 1539, or Sargent® 13-3266 cylinders to be used in 18 & 19 Series lever functions 24, 26, 2B, 2R, or 2F and in knob function 24. 	CT-V14	CT-V14	94-0087

# W A R R A N T Y

## LIFETIME LIMITED WARRANTY

Medeco Security Locks Incorporated warrants that its Embassy lockset products will be free from defects in materials and workmanship. This warranty is limited to the lifetime of the original door on which the Embassy lockset product is installed. In the event the lockset product does not conform to this warranty, Medeco will repair or replace the lockset free of charge. Purchaser is responsible for returning the lockset to Medeco, postage prepaid, with proof of the date of purchase in accordance with the instructions from the Medeco Customer Service Department at the number listed below. In the event the lockset being returned is no longer currently being manufactured, Medeco reserves the right to replace the defective product with a product of similar design and quality. The return of the product for repair or replacement shall be the sole remedy available to the purchaser under this express limited warranty.

This warranty does not cover defects or damages arising from improper installation, lack of proper maintenance, improper storage, shipping or handling, misuse, abuse, accident, unauthorized service or use with nonconforming parts or products not made by Medeco, to the extent such nonconforming parts or products are the cause in whole or in part of the defect. Due to the effects of climatic conditions, chemical and abrasive actions, finishes are excluded from this warranty unless a separate express warranty is provided. This warranty does not cover keys, lock cylinders, or interchangeable cores that may be covered by separate express warranties.

For warranty claim service, contact Medeco Customer Service at 1-800-839-3157.

MEDECO SECURITY LOCKS MAKES NO OTHER WARRANTIES, EXPRESS OR IMPLIED, INCLUDING THE IMPLIED WARRANTIES OF MERCHANTABILITY AND FITNESS FOR A PARTICULAR PURPOSE. IN NO CASE SHALL MEDECO SECURITY LOCKS BE LIABLE FOR INCIDENTAL OR CONSEQUENTIAL DAMAGES ARISING FROM ANY NONCONFORMANCE WITH OR BREACH OF THIS LIMITED WARRANTY, EVEN IF NOTIFIED IN ADVANCE OF THE LIKELIHOOD OF SUCH DAMAGES. THE MAXIMUM LIABILITY OF MEDECO SECURITY LOCKS FOR ANY CLAIM UNDER THIS WARRANTY SHALL BE LIMITED TO THE PURCHASE PRICE OF THE PRODUCT. Some states do not allow limitations on incidental consequential damages or how long an implied warranty lasts so that the above limitations may not fully apply. This warranty gives specific legal rights and a buyer may also have other rights which may vary from state to state. (Effective November 1, 1997.)

## UNDERWRITERS LABORATORIES LISTING



Embassy locksets are listed by Underwriters Laboratories for use on fire doors having a rating of up to and including three hours. These locksets are available with 1/2" (13 mm), 9/16" (14 mm), or 3/4" (19 mm) throw latchbolts for use on all classes of locations when applied to hollow metal, metal-clad, composite, and sheet metal type fire doors. It is advisable to check with local authorities, the "Building Materials Directory" published by UL, and the door manufacturer for specific hardware requirements.

## ANSI COMPLIANCE

Embassy locksets conform to ANSI A156.2, 4000 Series, Grade 1 or Grade 2 specifications, and can be installed on doors prepared to ANSI Specification A115.2.

Embassy locksets also conform to ANSI A117.1 which calls for doors to dangerous areas to be identified to the touch for blind persons. To meet this requirement, trim designs are available with an abrasive coating. To order abrasive coated trim, refer to ordering instructions.

# O R D E R F O R M

HIGH SECURITY LOCKS



## Order By Phone

You can order toll-free by calling 800-839-3157 from anywhere in the United States. Phone in your order 5 days a week, Monday through Friday, 8 a.m. to 5 p.m. Coast to coast (8 a.m. - 8 p.m. EST)



## Order By Fax

Fax us your completed order form toll-free, 24 hours a day at 800-421-6615 from anywhere in the United States.



## Order By Mail

Mail your completed order form, along with your payment to: Medeco Security Locks, Inc. P.O. Box 3075 Salem, VA 24153

**1** Today's Date \_\_\_\_\_ **2** Your P.O. Number \_\_\_\_\_ **3** Your Medeco Customer Number \_\_\_\_\_

**4** **Ordered By:**  
 Name \_\_\_\_\_  
 Company \_\_\_\_\_  
 Street Address \_\_\_\_\_  
 City \_\_\_\_\_ State \_\_\_\_\_ Zip \_\_\_\_\_  
 Telephone \_\_\_\_\_ Fax \_\_\_\_\_

**5** **Ship To: (if different)**  
 Name \_\_\_\_\_  
 Company \_\_\_\_\_  
 Street Address \_\_\_\_\_  
 City \_\_\_\_\_ State \_\_\_\_\_ Zip \_\_\_\_\_  
 Telephone \_\_\_\_\_ Fax \_\_\_\_\_

**6** **Product Availability:**  
 If part of your order is not stocked by Medeco QuickShip, do you want a partial shipment of the products that are stocked?  Yes  No

**Delivery Options:**  
 Standard UPS  2nd Day Delivery  Next Day Delivery

**7** **Method of Payment:**

Master Card  Check   
 American Express  Visa  Open Account

Credit Card Number \_\_\_\_\_ Exp. Date \_\_\_\_\_  
 Signature \_\_\_\_\_

**8**

QTY	PART NUMBER	FINISH	KEY WAY	CAM OR TAILPIECE	CYL. RING	KEYING	NO. OF KEYS	LISTPRICE	UNIT

### Questions...

If you have any questions about the order form, or need any assistance, simply call your Medeco Customer Service Representative at 800-839-3157. Representatives are available 5 days a week, Monday through Friday 8 a.m. to 5 p.m. Coast to coast (8 a.m. - 8 p.m. EST).

<b>Total Merchandise</b>		\$
<b>Discount</b>		%
<b>Dealer Price</b>		\$
<b>Sales Tax (where applicable)</b>		\$
<b>Shipping</b>		\$
<b>Grand Total</b>		\$

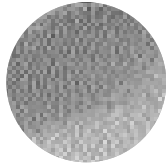
For Internal Use Only	JOB NO.	DATE	INITIAL	DUE TO SHIP	CC App
-----------------------	---------	------	---------	-------------	--------

Copy for your convenience.

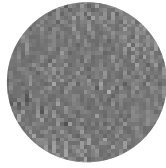
O R D E R F O R M

# F I N I S H E S

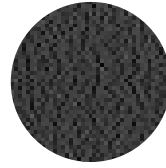
## LOCKSET FINISHES



Bright brass, clear coated  
US3 605



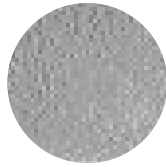
Satin bronze, clear coated  
US10 612



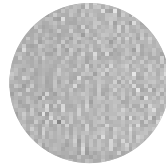
Satin bronze, oxidized & oil rubbed  
US10B 613



Bright chrome plate  
US26 625



Satin chrome plate  
US26D 626



Satin stainless steel  
US32D 630

Medeco is proud to offer a complete product line including cylinders, deadbolts, padlocks, cam locks, and electronic access control systems, all built to your demanding specifications.

To order products, request additional catalogs, or for more information, call the Medeco Door Security representative in your area or contact Medeco customer service at 1-800-839-3157.

