

SiteLine® Single Door Controller



SiteLine Single Door Controller system, features the capacity of a hard-wired system, up to 1200 users and an audit trail for nearly 800 transactions, with the low cost, simple setup and operation of a keypad! SiteLine Single Door Controller lets you combine both electronic and mechanical access control through a unique dual-function, affordable credential. For an even more secure access control solution, SiteLine is available with an Electronic Keyway upgrade, providing you with far more security than available from similarly priced systems.

- ▼ **Control access for up to 1200 users**, with an audit trail of nearly 800 transactions per door, 24 hours a day, 7 days a week.
- ▼ Now you can have the **convenience and economy** of a keypad with the functionality of a hard-wired system.

Benefits:

- ▼ A system that offers the economics of a keypad, with the audit trail and time grouping features typically found on hard-wired systems.
- ▼ The protection of having the processor and lock relay on the "secure" side of the door.
- ▼ Powerful and easy to use Windows® based software capable of controlling up to 10,000 users in the system.
- ▼ Unique "portable database" means of programming.
- ▼ The security of an audit trail from each door for nearly 800 transactions.
- ▼ Proven Medeco® Key / Access credential control.
- ▼ The simplicity of a single credential for both electronic and mechanical access control.
- ▼ A durable credential that is guaranteed for life.
- ▼ Sleek, unobtrusive hardware blends into any architectural style.
- ▼ Secure, nonvolatile configuration - maintains programming and audit information even during a power outage.

Features:

Flexible Access Schedules

Each SiteLine® controller supports a total of 4 Access Schedules. Access schedule 4 is fixed and provides access 24 hrs/day, 7 days/week. Access schedules 1-3 are user specified seven day schedules defined in half-hour increments. In addition to controlling access based on an Access Schedule, each user can be granted or denied access during holiday periods.

Informative, Powerful Audit Trail

The SiteLine Single Door Controller stores nearly 800 transactions in nonvolatile memory. Transactions are time and date stamped. Transactions are retrieved by presenting a Program/Audit key to the controller. For additional system security, before the controller will transfer audit data to the key, it verifies that the key belongs to that specific system, and that it has been initialized at the PC with the serialized software.

Convenient Unlock Privilege Function

Any user can be granted the unlock privilege on any reader in the system. Users assigned this privilege can use their SiteKey access key twice in succession to invoke the unlock command. This will cause the door to remain unlocked until the unlock command is invoked a second time, at which time, the controller will resume normal operation.

Install To Your Local Building Code With Convenient Handicap Access Features

The SiteLine system was designed to easily integrate with a powered door operator. An input is provided for the handicap button and an output is provided to activate the door operator. Since it is the SiteLine Single Door Controller unit which controls the door operator, the typical problem is avoided where the operator is trying to open the door before the electric strike has released. To gain access using the door operator, a valid key must be presented and the handicap push button must be operated. When the reader is in the UNLOCKED mode, operation of the handicap push button initiates operation of the powered door.

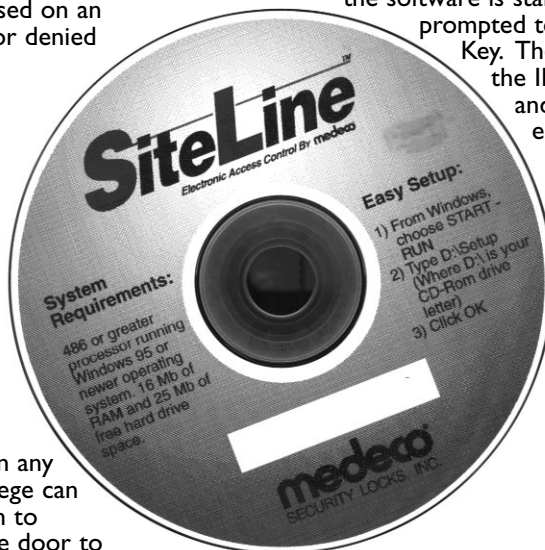
Reduce User By-Pass With The "Door Held Open" Alert

The SiteLine Single Door Controller provides a "Door Held Open" feature which causes the reader to sound an alarm if the door is held open longer than a specified period. This feature greatly discourages users from propping SiteLine equipped doors open. In addition to sounding the alarm, Door Held Open transactions can be recorded (at your option) in the audit trail.

Software Information:

The powerful SiteLine Access Control Software is intuitive and easy to operate. New users are added to the system by simply entering basic information about the key holder and assigning them access schedules and holiday rights, for each reader in the system. The new user information is loaded into the Program Key and carried to any door that needs to be updated.

For an extra measure of security, when the software disk is generated, a unique ID number is programmed that matches the same ID in the Setup Key. This data is encrypted and stored in the SiteLine software. Each time the software is started, the user is prompted to present the Setup Key. The software then reads the ID number from the Key and compares it to the encrypted ID number stored in the software. If they match, the software continues normally. If they do not match, the software will not run, preventing unauthorized use or modification of the access schedules.



Report Information:

The powerful access control software will generate many useful reports to either the screen or a printer, including:

- **User Data**

This function generates a report (to screen, file or printer) of all or selected keyholders. The following data is included:

Key number	Active Status (Y/N)
Key holder Name	Any two of the 8 user Info Fields (definable)

- **User Privileges**

Reports on all users who have access for up to eight (8) selected Reader Groups.

- **Door Report**

Reports on all Readers and their associated Individual Reader Parameters as defined during initial system programming.

- **Holidays**

Reports on all holiday dates.

- **Audit Transaction History**

This function can generate a history report for a selected door/user or for the entire system. The database may be searched by:

Door Description	Door Number	Time
Date	Transaction Type	Key Number
Key Holder Name		

Controller Information:

- ▼ Each Controller Supports:

- 1200 Users Per Controller (10,000 total in system)
- 4 Access schedules (1 fixed, 3 user programmable)
- 768 Audit transactions
- 50 Holidays

- ▼ The SiteLine Single Door Controller software supports up to 255 individual readers (divided into any number of groups). A maximum of 10,000 users can be supported in the PC database (max. 1200 users in any single reader).

- ▼ Offers many of the features of expensive, difficult to install hard-wired systems, the SiteLine controller supports the following inputs/outputs (in addition to the reader):

- Input for door contact switch
- Input for handicap request to enter
- Input for request to exit switch
- Lock output (max. 250ma. @ 12VDC)
- Power door operator normally open dry contact

Questions & Answers:

How is SiteLine® Single Door Controller different from other EAC systems?

SiteLine is far more robust! Most single door systems in this price range offer only 24 hour access to authorized users with no audit trail. Medeco SiteLine controls access for up to 10,000 users in a system, with an audit trail of nearly 800 transactions per door. In addition, SiteLine is the only access control product on the market offering the dual functionality of electronic and high security mechanical access control.

I've heard of some of the shortfalls of card access systems... how does this product compare?

Card based systems utilize a credential that is fragile, easily broken, prone to damage from magnets, and worst of all, can be read and duplicated easily. Think about it... each time you use a credit card, the store clerk scans and reads your card - reading the data off the access control card is just as easy, and with very basic electronics, the card can then be duplicated.

Is the Single Door Controller compatible with the Intelligent Lockset™?

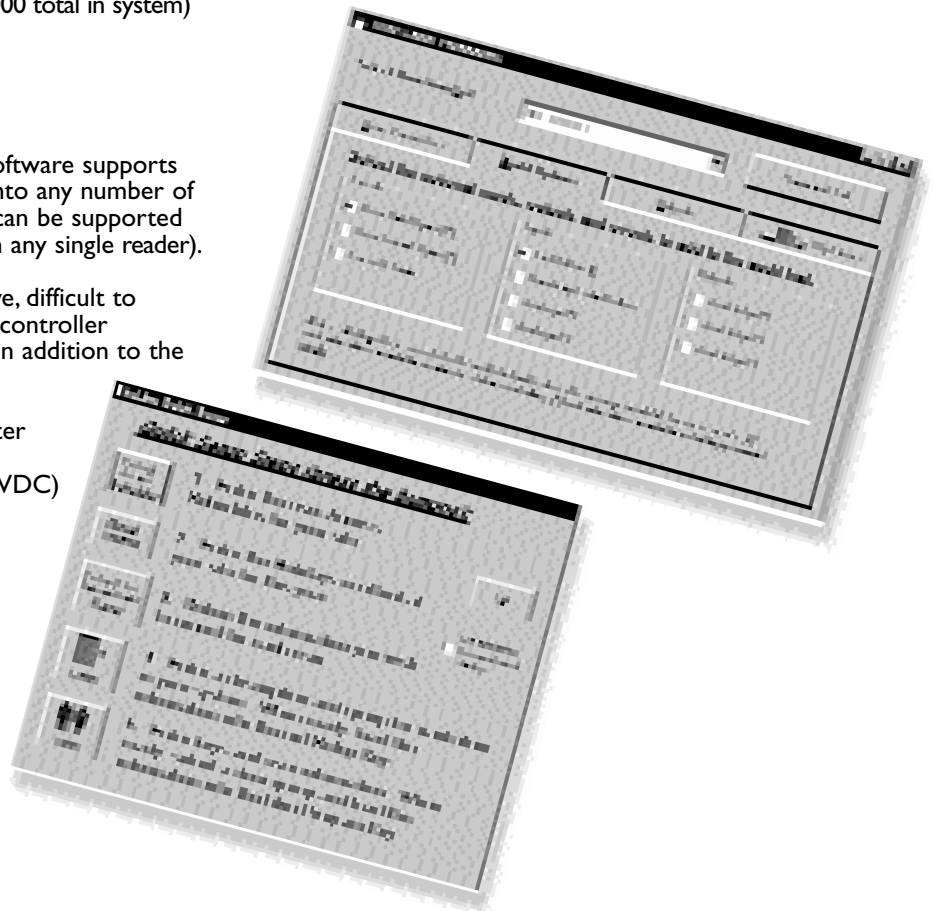
Yes. Both products can be programmed from the same software package and used on the same site with the same credentials.

Is the Single Door Controller compatible with the RetroSite™ readers?

The same credentials can be programmed into the Single Door Controller, the Intelligent Lockset, and the RetroSite readers simultaneously. However, the RetroSite reader must be connected to and programmed with a third-party host system.

Who controls the SiteLine software?

The SiteLine Access Control Software was designed to be run at the physical location of the system. It is simple and intuitive to operate, so anyone can learn to operate it.



Technical Information:

Audit Schedules:

Four Standard Schedules: One 24 hour/7 day per week (full access) schedule plus 3 User defined 7 day schedules (1/2 hour intervals). Holiday Access: Standard, 50 holidays can be programmed, access rights assigned to any key holder.

Users:

1200 Users per door, 10,000 total in system.

Readers:

Readers: 255 key readers (can be divided into any number of groups).

Audit Trail:

Standard, Most recent 768 transactions, time and date stamped, saved at each controller/door.

Power Supply:

Onboard, directly powers lock at 250mA, 12VDC. Supply voltage: 12 to 16.5 VAC, 20VA or 12VDC.

Lock Output:

Standard, open collector, 12VDC @ 250mA

Power Door Operator Output:

Standard, dry contact, normally open, 2A @ 24VDC.

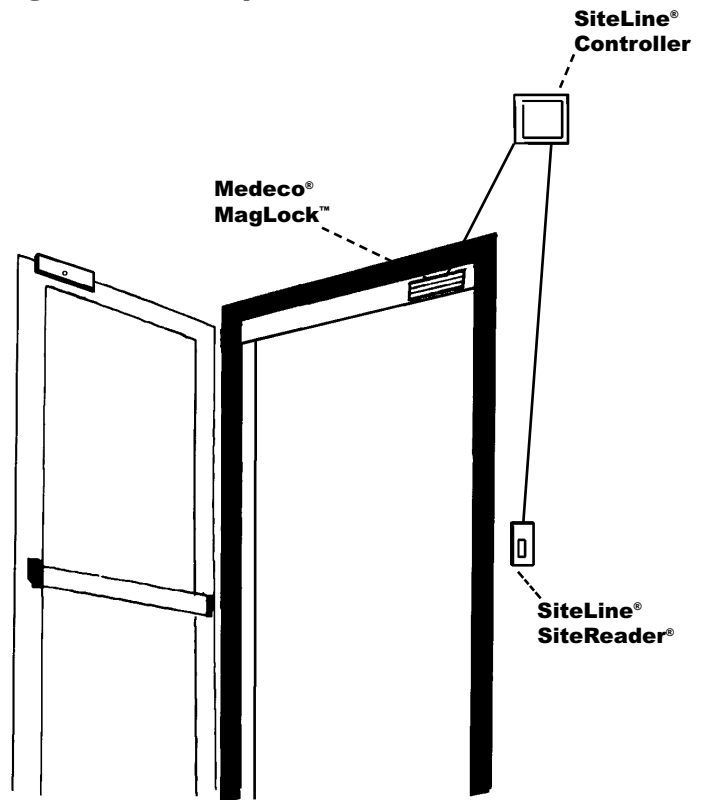
Operating Temperature:

-40°C to 70°C (-40°F to 158°F), Indoor/Outdoor use.

PC Requirements:

Windows® 95, COM 1-5 serial port supported.

Diagram of Simple Installation:



Medeco U.S.: 3625 Allegheny Drive,
P.O. Box 3075, Salem, Virginia 24153-0330
Customer Service: 1-800-839-3157

medeco[®]
HIGH SECURITY LOCKS
www.medeco.com

Medeco Canada: 545 Parkside Drive,
Waterloo, Ontario N2L 5E7
Customer Service: 1-888-633-3264

Founded in 1968, Medeco is a market leader in locks and locking systems for security, safety, and control. The company's customer base includes Wholesale and Retail Security providers, Original Equipment Manufacturers, and Industrial End-users.

The ASSA ABLOY Group is the world's leading manufacturer and supplier of locks and associated products, dedicated to satisfying end-user needs for security, safety, and convenience.